

medicine

BBS/MD Doctor of Medicine

*"Innovation medical
education and research
advancement"*

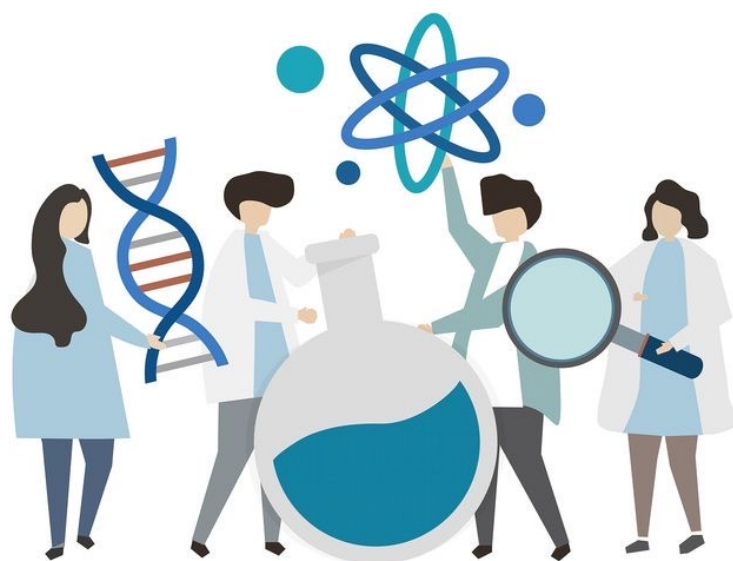
The Faculty of Medicine, KMITL

*curriculum is designed to
help our students develop
appropriate skills, both
cognitive and procedural,
for their further training.
We provide opportunity
for the students to have
selective practicums
according to their
interest.*

**Total 247 credits
to complete the degree**
Medium of Instruction : English

General Education 30 credits
Major courses 175 credits
Free electives 6 credits
Individual research and thesis 18 credits

**6-year advanced
professional and
research-based
bachelor**



curriculum



We employed the 'transformative learning' approach in designing our curriculum.



One fundamental transformation emphasised in our curriculum is the shift from fact memorisation to searching, analysis, and synthesis of information for decision making.



Therefore, the curriculum would foster the development of independent learning skill which is necessary for life-long learning. Learning and innovation skills is also a part of our "the 21st century skills" outcome.

tuition
fee

15,000 USD/semester
(180,000 USD for the entire program)

**** 495,000 baht/semester (5,940,000 baht for the entire program)**



Medicine

study / plan



Semester 1

Semester 2

Year 1

Core Course

Scientific methods
Applied physics and mathematics for health sciences
Introduction to medical profession
Medical biochemistry and molecular biology
Human behaviour and sociology
Communication in Thai for medical profession
English for medical profession
Creative thinking and innovation
Free elective

Computer and digital technology for health sciences

Cell and tissue physiology
Fundamental health economics
Health policy and public welfare
Academic reading and writing for health sciences

Selective study in language subject
World culture
Medical ethics and professional law
Free elective

Year 2

Pre- Clinical Development

Clinical anatomy and medical imaging
Body movement and control
Body fluid homeostasis
Body fluid homeostasis 2
Body energy homeostasis
Body regulation and defence

Sex, gender, reproduction and healthy living
Brain and mind
Human genetics, growth and development
Molecular medicine and pharmacotherapeutics
Research methodology, biostatistics and epidemiology

Year 3

Pre- Clinical Development

Arts and sciences of clinical diagnosis
Clinical microbiology and infectious diseases
Cardiovascular medicine
Respiratory medicine
Gastroenterology and herpetology
Renal and genitourinary medicine
Allergy, immunology and rheumatology
Endocrinology and metabolism

Hematology and oncology
Clinical neurosciences
Mental health and psychopathology
Aging and degenerative disorders
Evidence-based medicine
Health promotion and disease prevention
*Integrated biomedical sciences
*Research experiences in biomedical sciences

Year 4

Clinical Training

Principles of biomedical engineering (MEng 01317542)
#Advanced subject in biomedical sciences
#Advanced subject in biomedical sciences 2
Essential clinical skills
Forensic medicine
Family medicine clerkship
*Seminars in biomedical research 1
*Individual research 1

*#Biomedical research selective 1
*#Biomedical research selective 2
*Seminars in biomedical research 2
*Individual research 2
Community and global medicine
Neurology, geriatric and rehabilitation medicine clerkship

Psychiatry clerkship

*** S/U grading will be offered**

Students may choose to study any research courses in biomedical sciences, biotechnology or biomedical engineering at the Master Degree level

Medicine

study / plan



Semester 1

Semester 2

Year 5

Clinical Training

Internal medicine clerkship
Surgery clerkship
Anesthesiology, cardiology and critical care medicine
clerkship Obstetrics and gynecology clerkship
Pediatric clerkship
*Seminars in biomedical research 3

*Individual research 3
Ambulatory medicine clerkship
Accident and emergency medicine clerkship
Oncology and palliative medicine clerkship
Selective clerkship 1
Selective clerkship 2
*Thesis 1

Year 6

Clinical Training

*Introduction to clinical practice in the health care system
*Practicum in internal medicine
*Practicum in surgery
*Practicum in pediatrics
*Practicum in obstetrics and gynecology
*Practicum in orthopedics and emergency medicine

*Practicum in community hospital
*Selective practicum 1
*Selective practicum 2
*Thesis 2
*Thesis 3

* S/U grading will be offered

Students may choose to study any research courses in biomedical sciences,
biotechnology or biomedical engineering at the Master Degree level



contact /

Faculty of Medicine, KMITL

Phone: +66(0)2329- 8300 ext. 2311, 2309

Website: md.kmitl.ac.th Facebook: <https://www.facebook.com/medkmitl>